



SPECIALTY HARDWARE

INNOVATIVE DESIGNS & SOLUTIONS

Hinges, Latches & Specialty Hardware
built to withstand the harsh elements
of the marine environment.



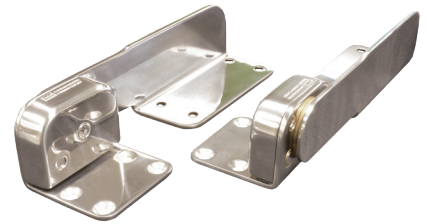
RATCHET HINGES

Constructed from high-grade Type-316L stainless steel and brass, our Ratchet Hinges are ideal for sun pads, bolsters, lounge backrests and a variety of other marine applications.

COMMAND RATCHET HINGE 9-3/8"

H25-0016

- ▶ Highly polished marine-grade stainless-steel
- ▶ All brass bearings for durability
- ▶ Meets ABYC H-31 standards class B application, 250lb ft of torque load for pair
- ▶ 15° locking inclination increments starting at 30°
- ▶ Designed for up to 4" thick cushions
- ▶ Countersunk for #10 fastener or 1/4-20 bolt



COMMAND RATCHET HINGE 18-1/2"

H25-0023

- ▶ Many of the great features as the H25-0016, but with one locking position as 61.5°
- ▶ Can be used for seatbacks up to 22" long and 4" thick
- ▶ Single or double-seat capacity
- ▶ Meets ABYC H-31 standards class B application, 500lb ft of torque load for pair



HIDEAWAY RATCHET HINGE

H25-0030

- ▶ Electro-polished stainless steel
- ▶ Easy, smooth operation with multiple backrest positions
- ▶ Three locking positions at 35°, 50° and 65°
- ▶ Easily modified to accommodate more or different angles by changing side plates
- ▶ Mounts to edge of bulkhead with the majority of hinge below deck
- ▶ Can be used for seat backs up to 20" long and 3-1/2" thick
- ▶ Tested up to 600 lbs. vertical load
- ▶ 500-hour ASTM B117-16 salt fog



Patent numbers US 8,875,347 and US 9,249,827

LATCHES

STAINLESS STEEL SUNDECK LATCH F16-0339POL-1

This low profile concealed latch is made entirely from Type-316L stainless steel and is perfect for an array of applications, including engine hatches, access panels, cabinet doors, dock boxes and folding seats. Its non-slip grip ensures a secure lift and comes with an adjustable anchoring stud.

- ▶ High-performance latch in Type-316L Stainless Steel
- ▶ Rugged construction with positive locking features
- ▶ Locking pin and bolt made of stainless steel Type-316L
- ▶ Low profile, concealed latches with a non-slip grip
- ▶ Ideal for coffin boxes, engine hatches, access panels, dock boxes, folding seats, leaning posts, large seats

LOW PROFILE, CONCEALED SUNDECK LATCH F45-0339

Our concealed, low-profile Sundeck Latch is perfect for an array of applications, including engine hatches, access panels, cabinet doors, dock boxes and folding seats. Its non-slip grip is perfect for a secure lift and comes with an adjustable anchoring stud.

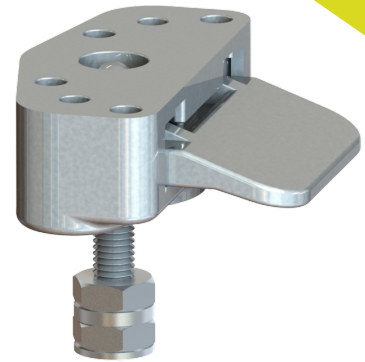
- ▶ Ideal for engine hatches, access panels, dock boxes, folding seats, leaning posts and large seats
- ▶ High-performance latch available in black or white
- ▶ Rugged construction with positive-locking features
- ▶ Locking pin and bolt made of stainless steel Type-316L
- ▶ Low profile, concealed latches with a non-slip grip

WALK-THRU WINDSHIELD LATCH F16-2900

Outfit your boat with the most durable specialty hardware on the market. The Walk-Thru Windshield Latch is designed and engineered for high performance and manufactured from the best marine-grade stamped stainless steel.

- ▶ Attaches to front deck and windshield doorframe
- ▶ Positive spring lock feature holds door securely in the open position

NEW



FENDER LOCKS



Our line of Fender Locks ensure secure, quickly stored fender lines that are maintained at the optimal length using the attached mounting pin. At the dock, simply tie off a hanging fender through the hole by the push button, insert the pin into the fitting and your boat is protected.

QUICK RELEASE FENDER LOCK

F16-0151

- ▶ Manufactured from stainless steel Type-316L
- ▶ Overall height above deck is 1-19/32"
- ▶ Includes a 1/4" drain plug
- ▶ Designed for easy, single-hand operation
- ▶ Install using a 3" drill bit through the gunwale
- ▶ Features a large push-button for comfortable operation
- ▶ Large 7/8" hole diameter for rope



QUICK RELEASE FENDER LOCK

F16-0200-1

- ▶ Manufactured from stainless steel Type-316L
- ▶ Designed for fiberglass
- ▶ Overall height above deck is 1-11/16"
- ▶ Features a 1" diameter button
- ▶ Nylon ring washer to separate dissimilar metals
- ▶ Mounting application fastens from the bottom of the Receiver



ALUMINUM QUICK RELEASE FENDER LOCK

F16-0180VEL

- ▶ Manufactured from 6000-series Aluminum
- ▶ Designed for pontoon boats
- ▶ Features a 1" diameter button
- ▶ Fits 1 to 1-1/4" square tube
- ▶ Mounting application fastens from the bottom of the square tube



PONTOON FENDER LOCK

F16-0220

- ▶ Manufactured from stainless steel Type-316L
- ▶ Designed for pontoon boats
- ▶ Features a 1" diameter button
- ▶ Fits 1" to 1-1/4" square tube
- ▶ Nylon ring washer to separate dissimilar metals
- ▶ Mounting application fastens from the bottom of the square tube



INTELLI-HINGE, FLUSH MOUNT

H90-0400

Introducing our Intelli-Hinge – a hinge that offers unprecedented design flexibility! Its unique design features an integrated ball-and-socket pivot point, which pivots on concave, convex and multiple plane surfaces. You can also use the hinge on any two sides, unlike conventional hinges that are limited by a fixed axis. This hinge is perfect for unique applications, such as curved latches, seats, anchor lockers, transom doors, engine compartments, under-seat storage and ski lockers. In specific applications, this hinge also has removable features. The design is also self-lubricating, which helps prevent corrosion and galling, and eliminates rattling.

- ▶ Corrosion-resistant, marine-grade cast stainless steel Type-316L
- ▶ Offers 20° range of motion
- ▶ Hinges from any two sides, unlike conventional fixed-axis hinges
- ▶ Low-profile design enhances the look of any boat
- ▶ Delrin insert prevents corrosion, galling and eliminates rattling

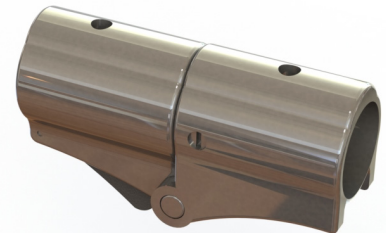


LOCKING TUBE HINGE, 7/8" OD

F11-1126

Our Locking 7/8" O.D. Tube Hinge permits you to connect two sections of tube to make folding strut bars, break-away console rails, gates on railings, Bimini stanchions and much more. This heavy-duty hinge can be folded down up to 180° with a simple push of the quick-release lever lock button. The hinge is locked securely in place by a stainless-steel latch for high levels of strength as well as marine-grade corrosion resistance

- ▶ Highly polished marine-grade stainless steel Type-316L
- ▶ Quick release lever action locking mechanism
- ▶ Fits 7/8" tube
- ▶ 3-year limited warranty

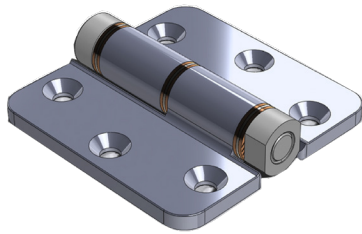


FRICTION HINGES

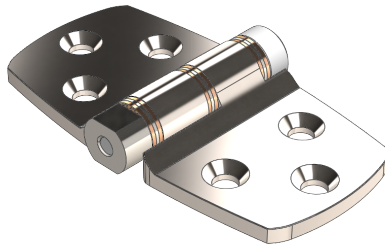
Introducing our innovative new family of Friction Hinges! Available in three different sizes, our Friction Hinges are constructed from high-grade-cast stainless steel leafs and bronze compression washers. These Friction Hinges provide smooth resistance for hatches, doors, lids and much more. Additionally, these hinges eliminate the need for gas shocks and springs, which take up valuable storage space.

- ▶ Cast-stainless-steel Type-316L hinge leafs and knuckle with a superior fit and mirror-polish finish
- ▶ Friction washers provide consistent resistance and smooth operation
- ▶ Each leaf has three countersunk holes for #10 fasteners
- ▶ Friction resistance from 0° to 90°
- ▶ Reduced installation costs when compared to gas shocks
- ▶ Supports a 12"W x 24"L x .75"T high-density polyethylene lid or door
- ▶ Easily adapts to numerous applications

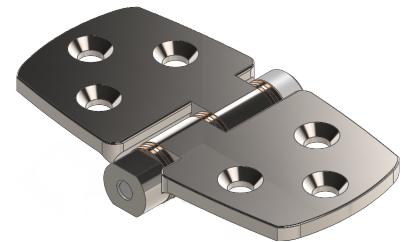
2.5"W X 2.5"L X .15"T
H30-5060



1.6"W X 2.96"L X .13"T
H30-5052



2.5"W X 2.5"L X .15"T
H30-5053



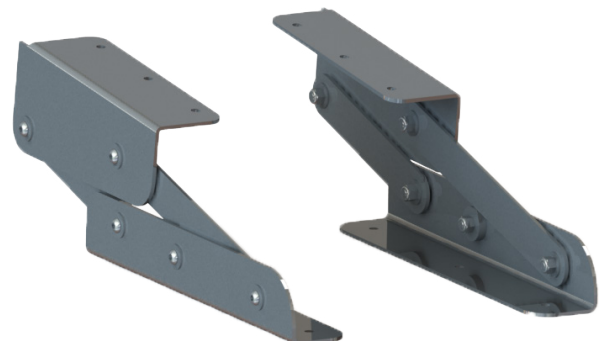
Features a reversed pin

STAINLESS STEEL FOLDING SEAT BRACKET

2.49"W X 16.38" L

H25-0011

- ▶ Ideal for foldout jump seats, transom bench seats and other seating applications
- ▶ Stands under 11" tall when folded to 90°
- ▶ Polished stainless steel Type-316L
- ▶ Sold in a pair



DECK HINGES



Strong and durable, our comprehensive line of stainless-steel hinges is corrosion resistant and rust proof. Built to withstand the harsh elements of the marine environment, our Type-304 and 316L stainless-steel hinges provide years of trouble-free use.

**S/S BUTT HINGE,
2" X 2"
H20-0200**



- ▶ Stamped stainless steel Type-304
- ▶ Light gauge (.040" thickness)
- ▶ Sold individually
- ▶ Electro-polished finish

**S/S BUTT HINGE,
2-1/4" X 1-1/2"
H22-1550**



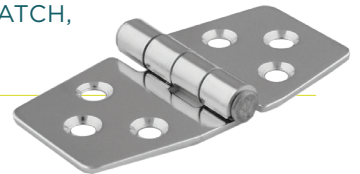
- ▶ Stamped stainless steel Type-304
- ▶ Heavy gauge (.060" thickness)
- ▶ Sold individually

**HEAVY-GAUGE HATCH HINGE,
3" X 3"
H23-0092**



- ▶ Stamped stainless steel Type-304
- ▶ Heavy gauge (.060" thickness)
- ▶ Sold individually

**S/S HEAVY-GAUGE HATCH,
3" X 1-1/2"
H23-1490**



- ▶ Stamped stainless steel Type-304
- ▶ Heavy gauge (.060" thickness)
- ▶ Sold individually

**S/S HEAVY-GAUGE
REVERSE PIN HATCH HINGE,
3" X 1-1/2"
H23-1499**



- ▶ Stamped stainless steel Type-304
- ▶ Heavy gauge (.060" thickness)
- ▶ Features a reversed pin
- ▶ Sold individually

**CAST S/S DECK HINGE,
CONCEALED FASTENERS,
1-1/2" X 3"
H30-1044**



- ▶ Fasten from underside for clean, contemporary design
- ▶ Stainless steel Type-316L
- ▶ Special order item
- ▶ High-polished finish
- ▶ Sold in pairs

**CAST S/S DECK HINGE,
CONCEALED FASTENERS,
2" X 4"
H30-1045**



- ▶ Fasten from underside for clean, contemporary design
- ▶ Stainless steel Type-316L
- ▶ Special order item
- ▶ High-polished finish
- ▶ Sold in pairs

**S/S HEAVY-DUTY STRAP
HINGE, 4" X 1"
H30-1010**



- ▶ Cast stainless steel Type-316L
- ▶ Light gauge (.040" thickness)
- ▶ Sold in pairs
- ▶ High-polished finish



Explore our complete line of Specialty
Hardware on our website.

[TACOMARINE.COM](https://www.tacomarine.com)

   [@tacomarine](https://www.facebook.com/tacomarine)  [@taco_marine](https://twitter.com/taco_marine) [#TACOMARINE](https://www.instagram.com/tacomarine)